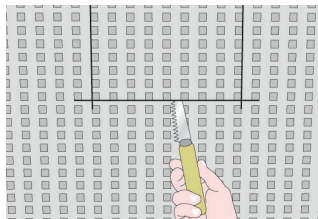
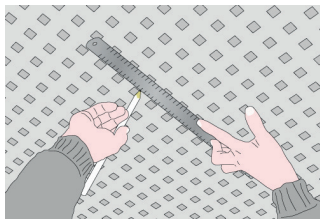


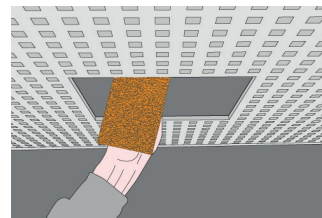
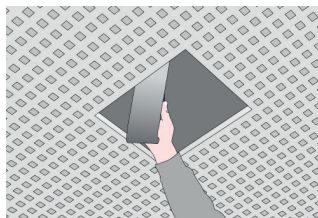
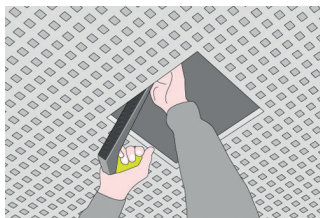
VOGL ACCESS PANEL INSTALLATION GUIDE

Mark intended position of access panels on ceiling, considering that cutout has to be 4 mm larger than access Panel / clear passage size. Then cut out marked section, making sure there are no panel joints within area of cutout.

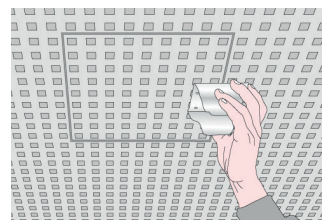
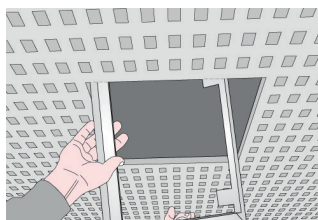
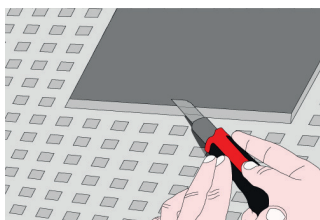

Note:

- Install trimmers of CD profiles in accordance with dimensions of access panel
- Observe distances between cutout and trimmer of min. 30 mm and max. 50 mm
- Mount 4 additional suspended brackets in corner areas of access panels
- It may be necessary to include additional suspended brackets so as not to exceed maximum bracket spacing

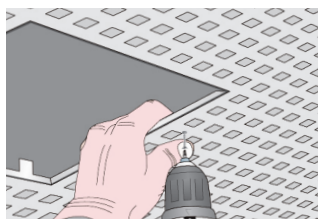
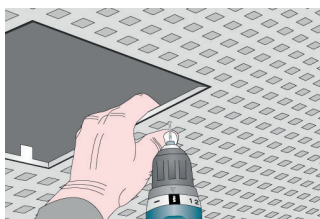
The way to achieve the most accurate dimensions of the cutout is to use a plasterboard plane and/or sandpaper / abrasive mesh for the precision work.



Chamfer visible side of acoustic design panel slightly to facilitate filling of joints later on. Then insert frame of access panel and hold it in place by means of a mounting aid matching perforation pattern.

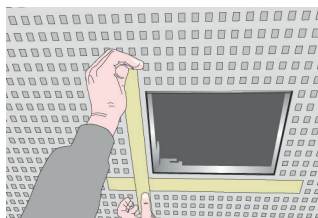
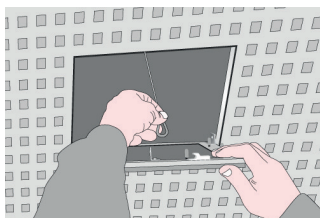


Predrill access panel frame with metal drill and fasten it with perforated panel screws SN.

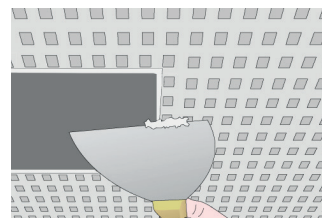
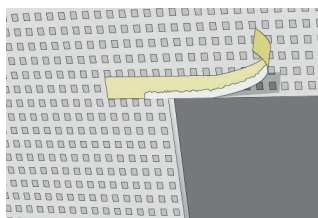
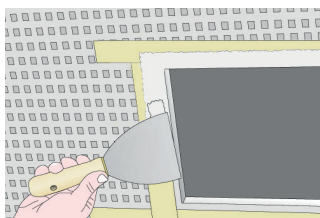


Be sure to use at least 2 screws per frame side for panel size < 500 x 500 mm and at least 3 screws per frame side for panel size > 500 x 500 mm.

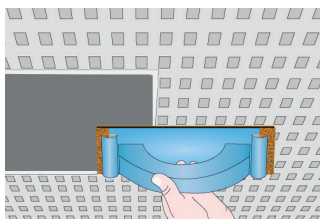
Then insert lid and check closing function. Cover row of perforation directly adjacent to access panel with masking tape.



Now apply filling compound to access opening, remove masking tape right afterwards and knock away any excess filler to make it flush with ceiling surface. Observe relevant filler manufacturer's instructions.



After filler has dried, sand any edges or protruding material.


Note:

- Our "Painting Instructions" are applicable for final coating
- Take out the access panel insert and paint it separately to prevent paint from getting into narrow joint between frame and insert
- Clean outer and inner frame thoroughly after coating
- Exception: With acoustic plaster ceilings, plasterboard insert should remain in ceiling surface in order to obtain uniform spray pattern. In this case make sure to clean joint between frame and insert after every spray application.